

# Jón Kjartansson SU-111

## -68,89 m Pelagic/Purse Seiner



### PRINCIPAL PARTICULARS

Length o.a.	68,89
Length p.p.	62,96
Breadth	10,4
Depth	7,94
Gross tonnage	1418
Speed	16,5 kn.

### MAIN MACHINERY

Make	Wärtsilä Vasa
Type	12V32 LEN /1999
Power	4920kW at 750 rpm
Main gearbox	SCV 850 P 104
Propeller	Wichmann CPS-100

### AUXILIARY MACHINERY

Power	mitsubishi 612 Kw
Shaft generator	ABB 2000 kW

### CAPACITIES

F.O Capacity	142 m <sup>3</sup>
H.F.O Capacity	160 m <sup>3</sup>
F.W Capacity	174 m <sup>3</sup>
RSW apacity	1650
Accommodation	18 persons

### WINCHING EQUIPMENT

Trawl winches	2 x RAPP 22040
Net drum	KARM 50t /Rapp 25t
Net sounder winch	5,5 T
Purse seiner winch	RAPP 2022
Fish pumps	KARM 18"/Rapp 14"
Net crane	KARM 75 t

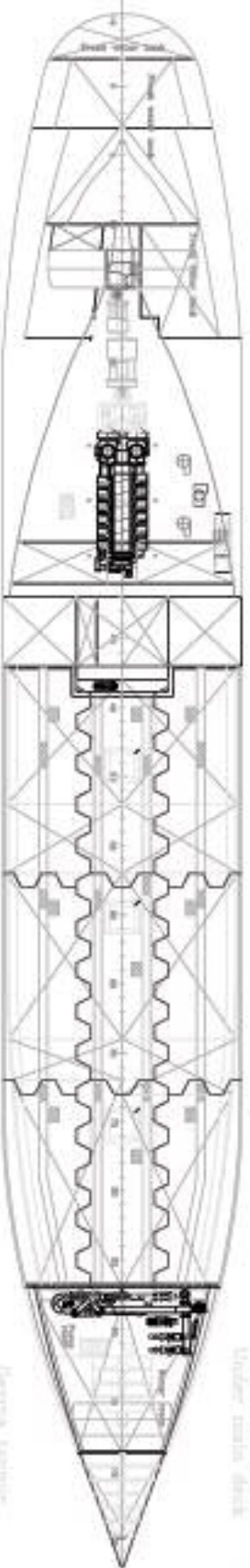
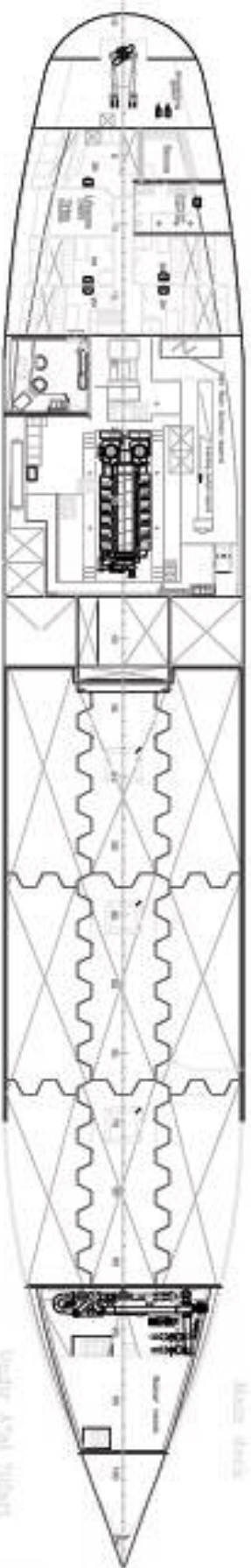
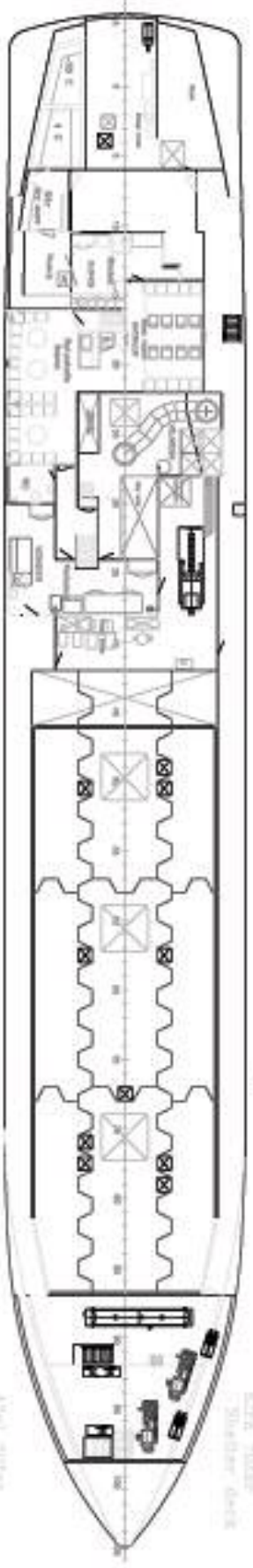
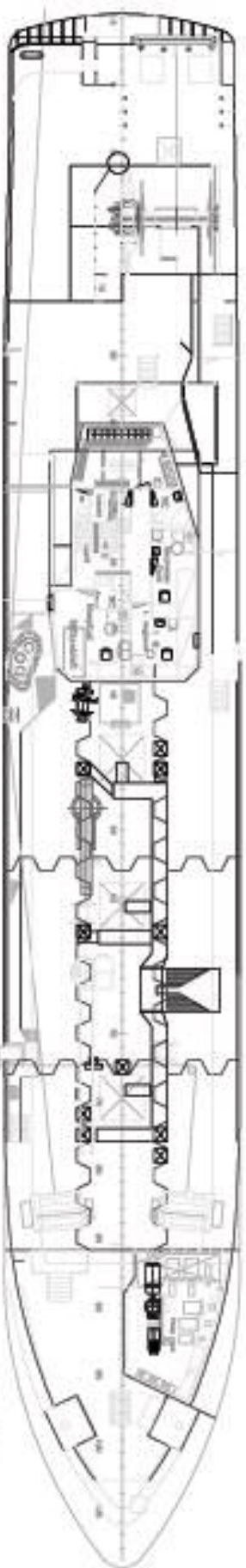
### SHIP & SPECIAL EQUIPMENT

Deck crane 1	PALLFINGER 4T/13m
Deck crane 2	Hmr-30-11-2S
Steering gear	SCAN MT-10000
Bow thruster	Brunvoll 315 kW
Stern thruster	Ulstein 590 kW
Life saving equipment	According to Solas
RSW plant	Kælismidjan Frost
RSW Capacity	2 x 562 kW
Fuel oil separator	ALFA MMPX-404
Lub.oil separator	ALFA LOPX-705 SFD
Marorka	Maren 2 Energi Management System

### ELECTRONIC EQUIPMENT

Sonar	Furuno CSH-20F
Trawlsonar	Westmar
Radar A	Furuno FR-2110
Radar B	Furuno FR-7062
Echo sounder A	Furino FCV782
Echo sounder B	ATLAS 872
GPS	Furuno / Magnavox
Chart system	Turbo 3000
Satellite system	Trimble galaxy St-C
Satellite TV system	Seatel Mod.3294
Radio plant	GMDSS
VHF	Scanti 2 X 9110 Furuno FM-2520
Mobile telephone	NMT and Iridium
Gyro	Anzchuts STD-20
Auto pilot	Anzchuts Pilotstar D

The wessel was totally rebuild in 1998.



Верхняя палуба  
Третья палуба

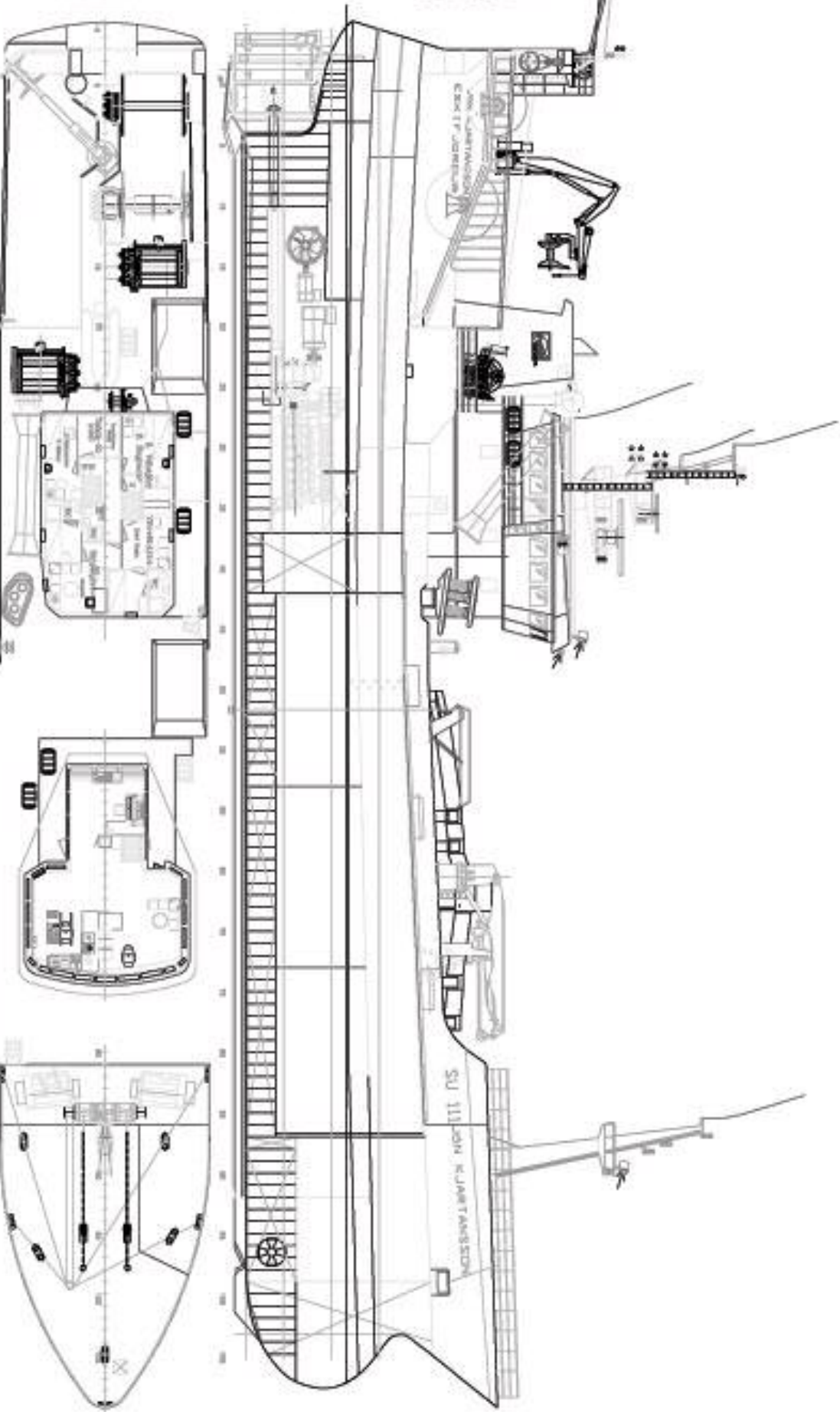
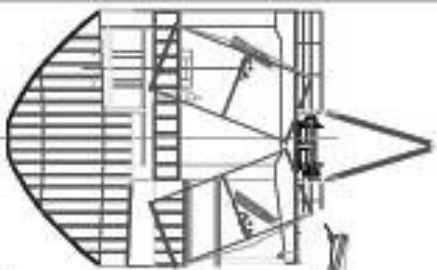
Средняя палуба  
Нижняя палуба

Палуба  
Палуба

Палуба  
Палуба

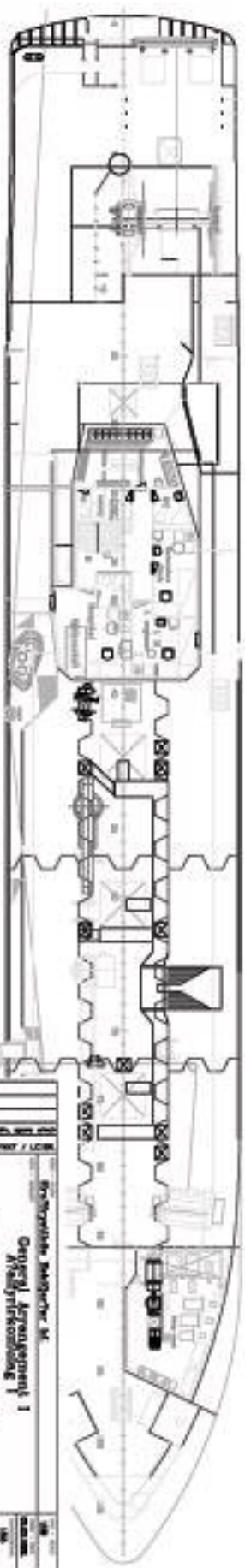
Имя: **ВЕЛІСТУ МАЛ.**  
 Страна: **Доминиканская Республика**  
 Тип: **Моторное судно**  
 Длина: **88,00 м**  
 Ширина: **12,42 м**  
 Высота: **5,800 м**  
 Год постройки: **1988**

Имя:	<b>ВЕЛІСТУ МАЛ.</b>
Страна:	<b>Доминиканская Республика</b>
Тип:	<b>Моторное судно</b>
Длина:	<b>88,00 м</b>
Ширина:	<b>12,42 м</b>
Высота:	<b>5,800 м</b>
Год постройки:	<b>1988</b>
Идентификационный номер:	<b>TEIKNISTOFA KG?</b>
Идентификационный номер (MMSI):	<b>2 92981</b>



HELISTU MAAL

Looa 60,00 m  
 Laup 50,00 m  
 Pikkus 19,00 m  
 Laenuks 1,00 m  
 Suurimad  
 0 0000  
 0 0000



Projektoria: M Otsustaja: K Kvalifikatsioon: I TEHNISTOFA KG?	
2.929A1	2.929A1